

Inchmore Wind Farm
 Inchmore, Co. Cork / Co. Kerry
 Figure 9.13 (a) (01) Constraints Map
 Wind Farm

nd

Development Layout

WF

- Red Line 23
- 230313 Site Layout
- Turbine Locations
- Site Entrances
- Proposed Met Mast
- Watercourse Crossings
- Proposed Borrow Pits
- Borrow Pit
- Proposed Temporary Construction Compound
- Proposed On-Site Substation
- House Locations

UGC

- Inchmore Grid Connection Route
- HDD Crossings

Delivery

- Redline-250 Haul Road - 256-Polyline
- Turbine Delivery Route
- Redline-250 Haul Road - 256-Polyline
- rbine Delivery Route

logy

- WFD_River/WaterbodiesActive_Cycle3
- A1&A2_Existing Drainage
- 25m SW Buffer
- 50m SW Buffer
- 15m Existing Significant Drain Buffer

Catchments

- WFD_Subcatchments
- WFD_Catchments

Hydrogeology

- Wells
- Recorded Wells (GSI)

Geology

- LandslideSusceptibility_clipped
- High

Base Maps

- Bing Aerial

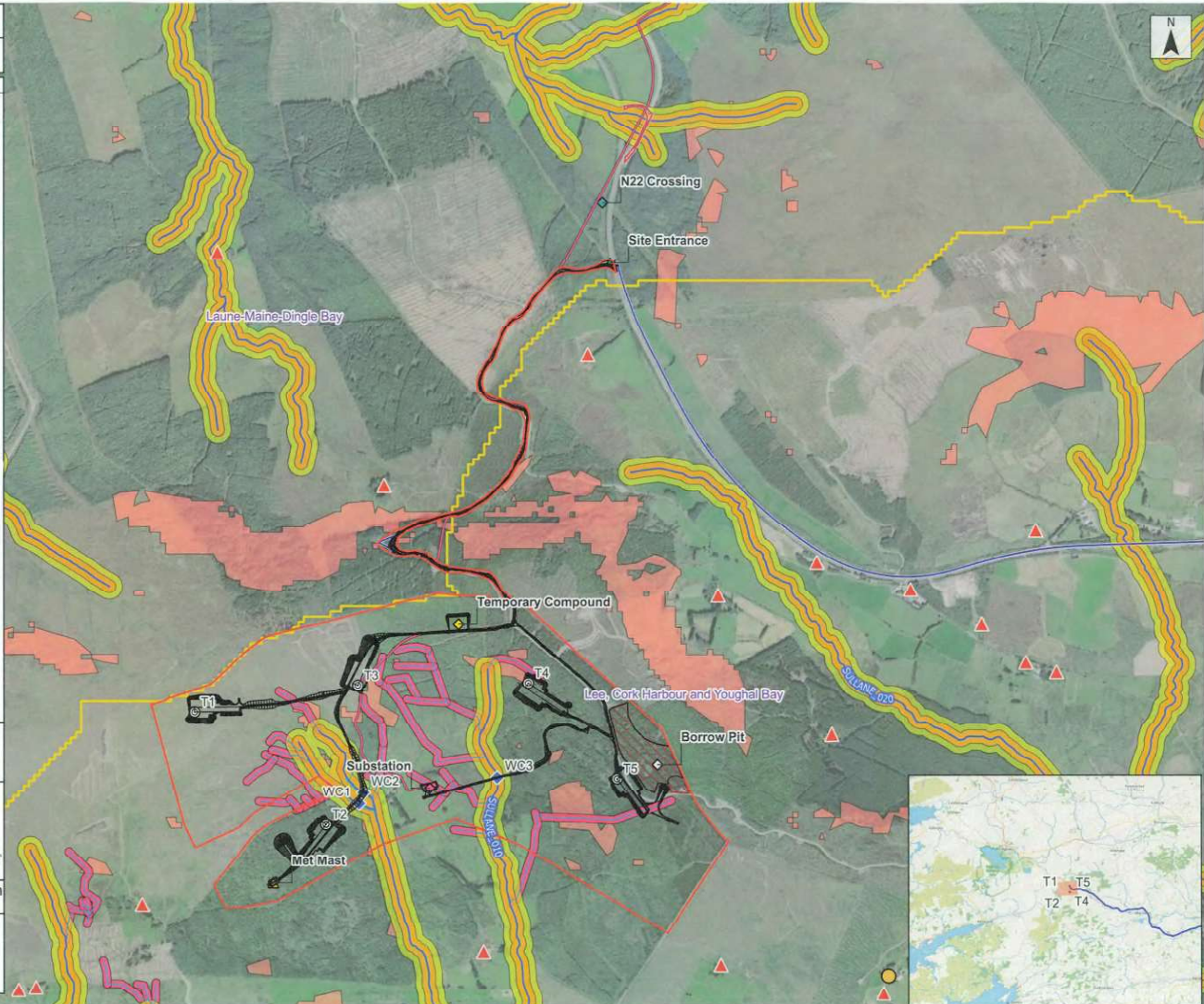
Project ID: 604162 Inchmore Wind Farm
 Projection: ITM
 Drawn by: Sven K.
 Reviewed by: Sven K.
 Version: 21/09/2022

References/Sources:
 Environmental Protection Agency (EPA)
 Geological Services Ireland (GSI)
 Bing Aerial / Google / Open Street Map / Google Roads
 GDEM Elevation Contours
 Phase 1 (250m Grid Peak Depth - Greensource)

Note: Data points presented are generated using open source data and/or a commercial GIS. The accuracy of these points is not guaranteed. The drawing should not be relied upon for detailed design purposes.

Scale: 0 0.27 0.54 km

RSK



Inchamore Wind Farm
 Inchamore, Co. Cork / Co. Kerry
 Figure 9.13 (b) (01) Constraints Map Grid Connection Route

Legend

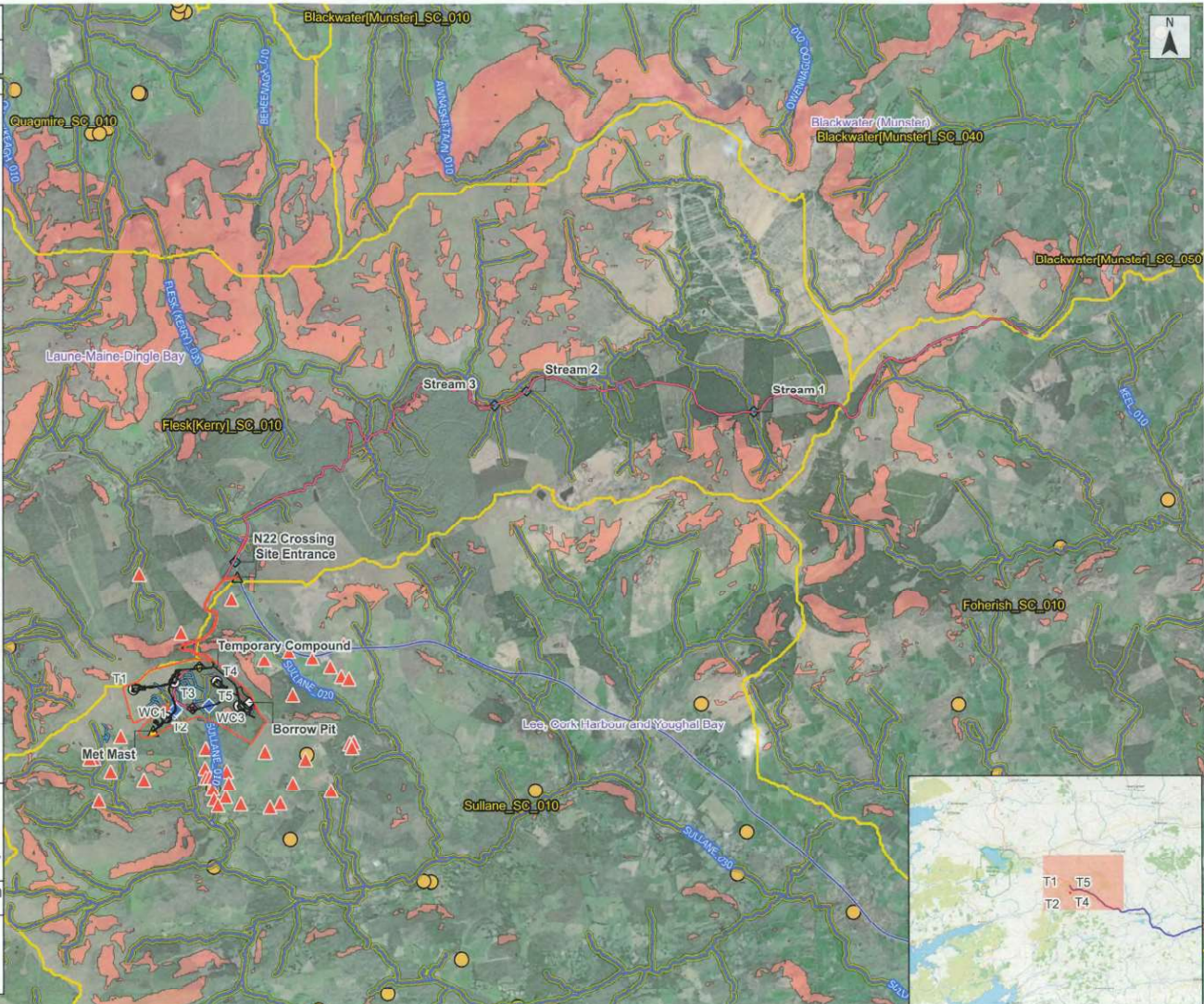
- Development Layout
- WF
 - Red Line 23
 - 230313 Site Layout
 - Turbine Locations
 - Site Entrances
 - Proposed Met Mast
 - Watercourse Crossings
 - Proposed Borrow Pits
 - Borrow Pit
 - Proposed Temporary Construction Compound
 - Proposed On-Site Substation
 - House Locations
- UGC
 - Inchamore Grid Connection Route
 - HDD Crossings
- Delivery
 - Redline-250 Haul Road - 256-Polyline
 - Turbine Delivery Route
 - rdline-250 Haul Road - 256-Polyline
 - rdline Delivery Route
- Hydrology
 - WFD_RiverWaterbodiesActive_Cycle3
 - AL&A2_Existing Drainage
 - 50m SW Buffer
 - 50m SW Buffer
 - 15m Existing Significant Drain Buffer
- Catchments
 - WFD_Subcatchments
 - WFD_Catchments
- Hydrogeology
- Wells
 - Recorded Wells (GSI)
- Geology
 - LandslidesSusceptibility_clipped
 - High
- Base Maps
 - Bing Aerial

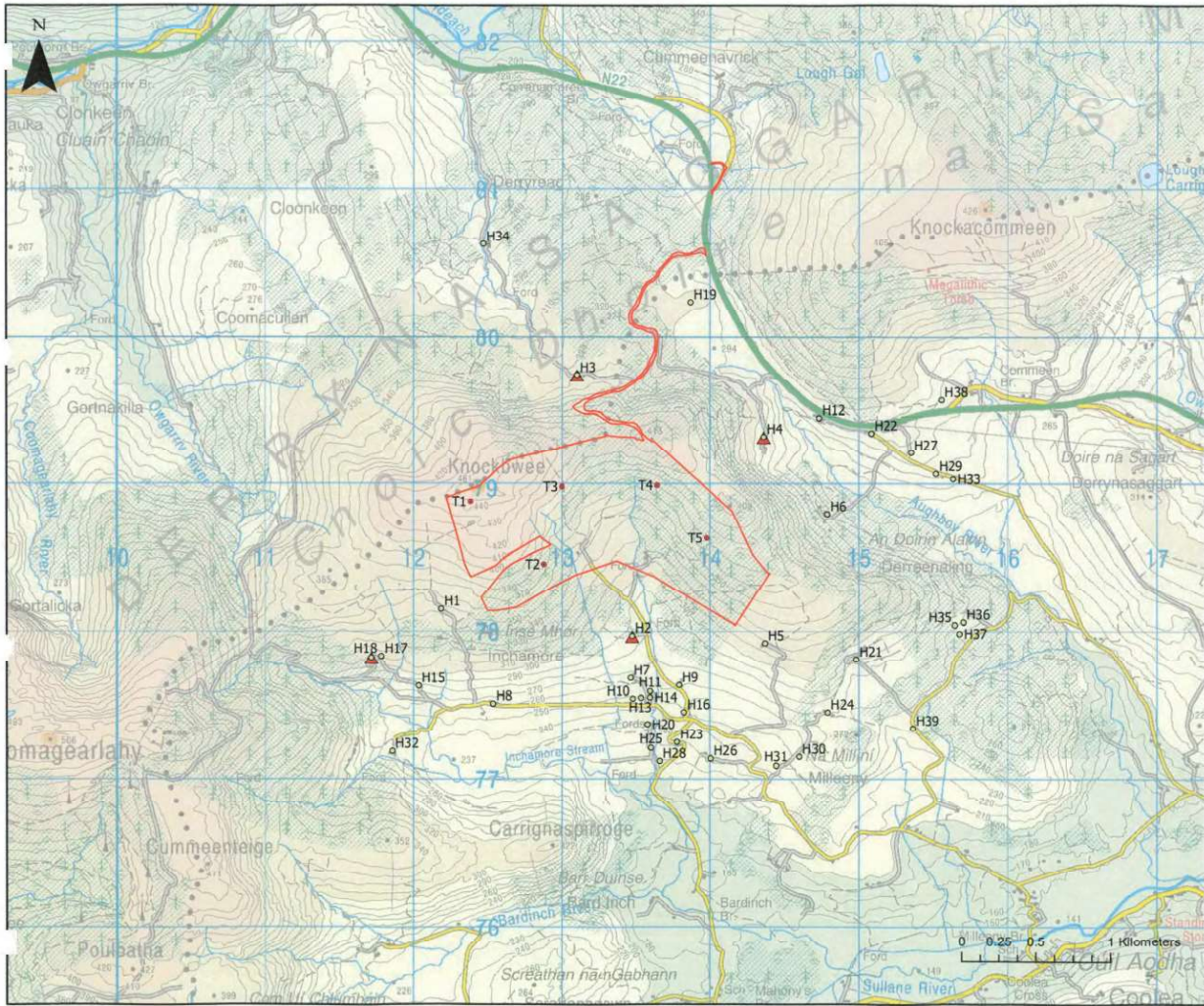
Project ID: 604162 Inchamore Wind Farm
 Projection: ITM
 Drawn by: Sven K.
 Reviewed by: Sven K.
 Version: 21/09/2022

References/Sources:
 Environmental Protection Agency (EPA)
 Geological Services Ireland (GSI)
 Bing Aerial / Geohive / Open Street Map / Google Roads
 GSDM Elevation Contours
 Phase 1 (250m Grid Post Depth - Greensource)

Note: Data points presented are georeferenced using open source data and/or a licensed GIS. This drawing / map is considered a conceptual model with reasonable accuracy for the purposes of environmental assessment. This drawing should not be relied upon for detailed design purposes.

Scale: 0 1.08 2.16 km



Legend

- Turbine Locations
- Site Boundary
- House Locations
- ▲ Noise Monitoring Locations

Rev	Date	By	Comment

Client
Inchamore Wind DAC

Client Representative


Project
Proposed Wind Farm at Inchamore, Coolea, Co. Cork.

Title
Noise Monitoring Locations

CYAL50313015
COPYRIGHT ORDNANCE SURVEY IRELAND / GOVERNMENT OF IRELAND

Drw. By	SB	Drw. No	-
Checked By	SM	Rev	1
Stage	EIAR	Date	03/04/23
Scale	1:25,000 (A3)	Figure	11.1



Legend

- Turbine Locations
- House Locations
- ISOVALUE_30
- ISOVALUE_35
- ISOVALUE_40
- ISOVALUE_45
- ISOVALUE_50

Rev	Date	By	Comment

Client
Inchamore Wind DAC

Client Representative

JENNINGS O'DONOVAN
CONSULTING ENGINEERS

Project
Proposed Wind Farm at Inchamore, Coolea, Co. Cork.

Title
Noise Contours

CYAL50313915
COPYRIGHT ORDNANCE SURVEY IRELAND / GOVERNMENT OF IRELAND

Org. By	SB	Org No	-
Checked By	SM	Rev	1
Stage	EIAR	Date	03/04/23
Scale	1:25,000 (A3)	Figure	11.2

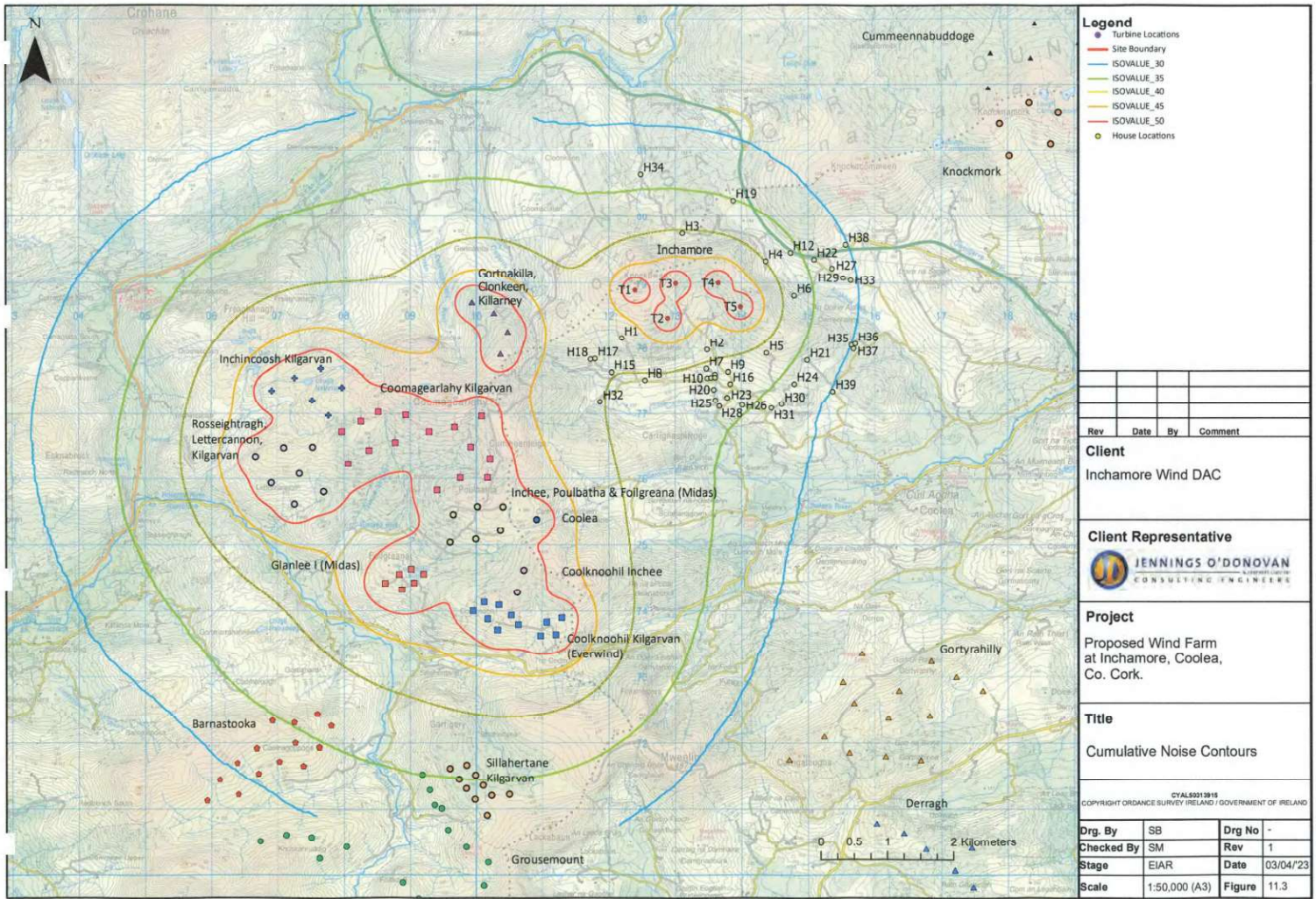


Figure 12.1 Landscape Character Types - Cork County Development Plan

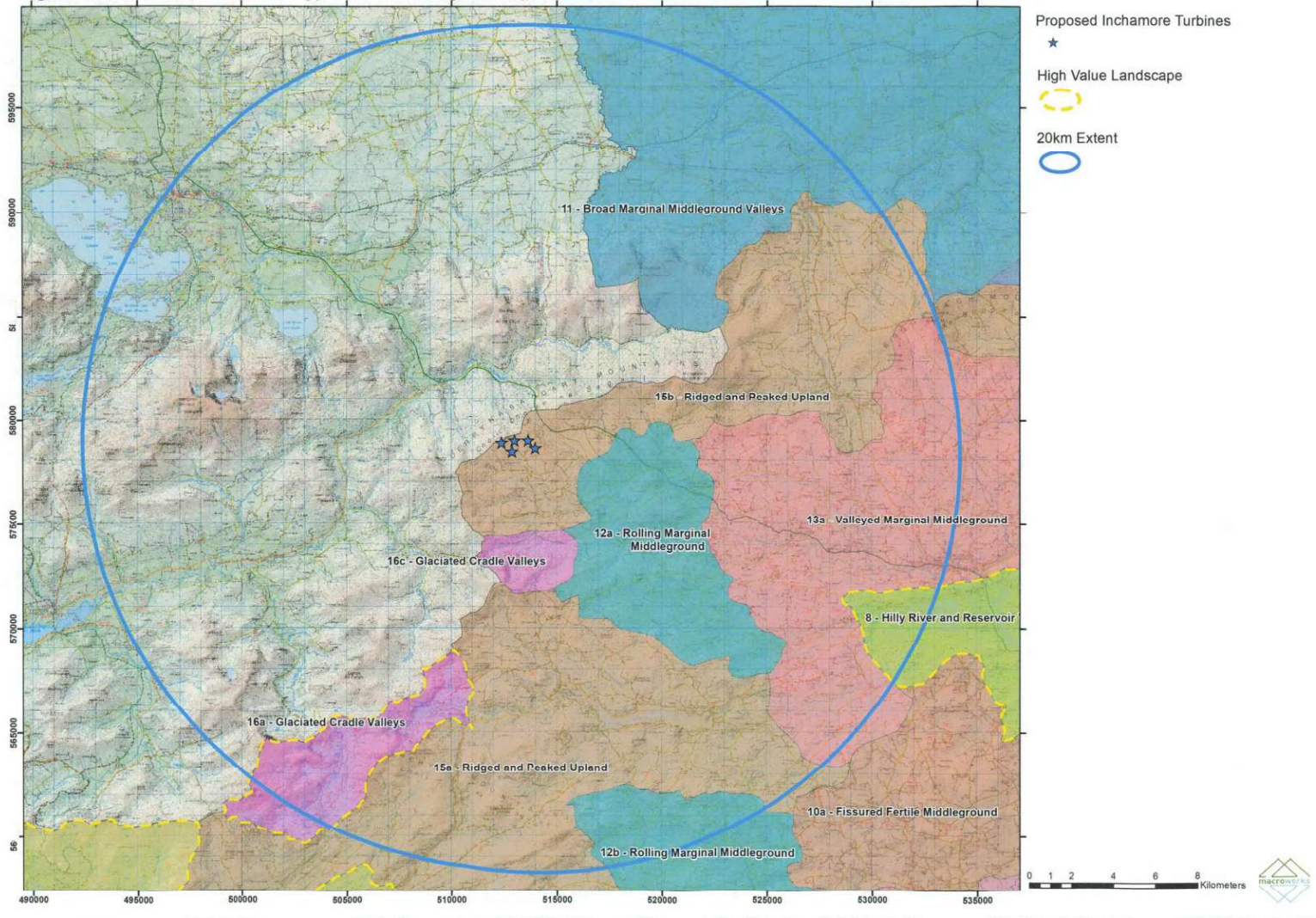


Figure 12.2 Relevant Designated Scenic Routes - Cork and Kerry CDPs including selected VPs

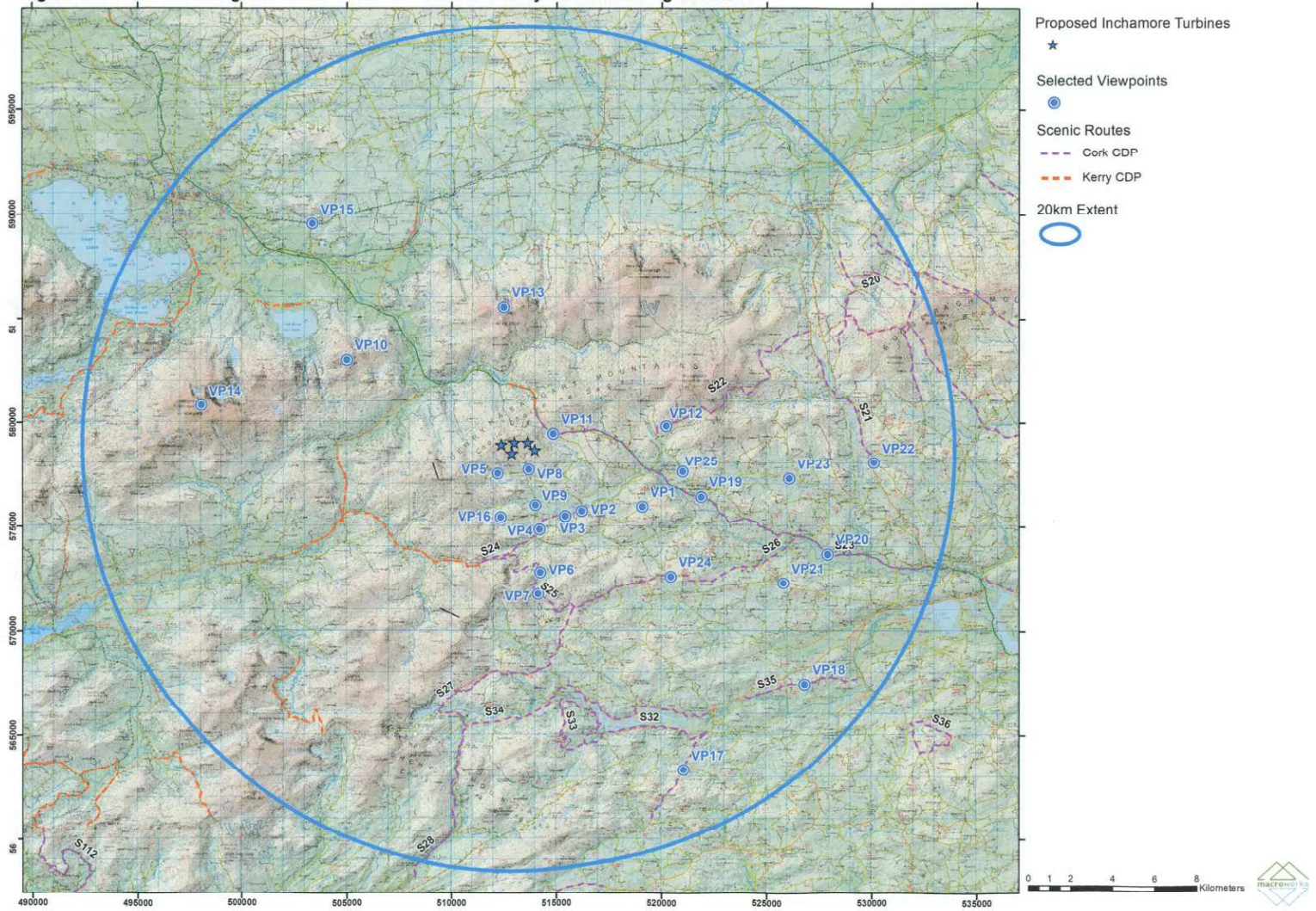


Figure 12.3 ZTV (Zone of Theoretical Visibility) indicating the areas that have a potential view of Inchamore Wind Farm turbines at 185m Tip Height

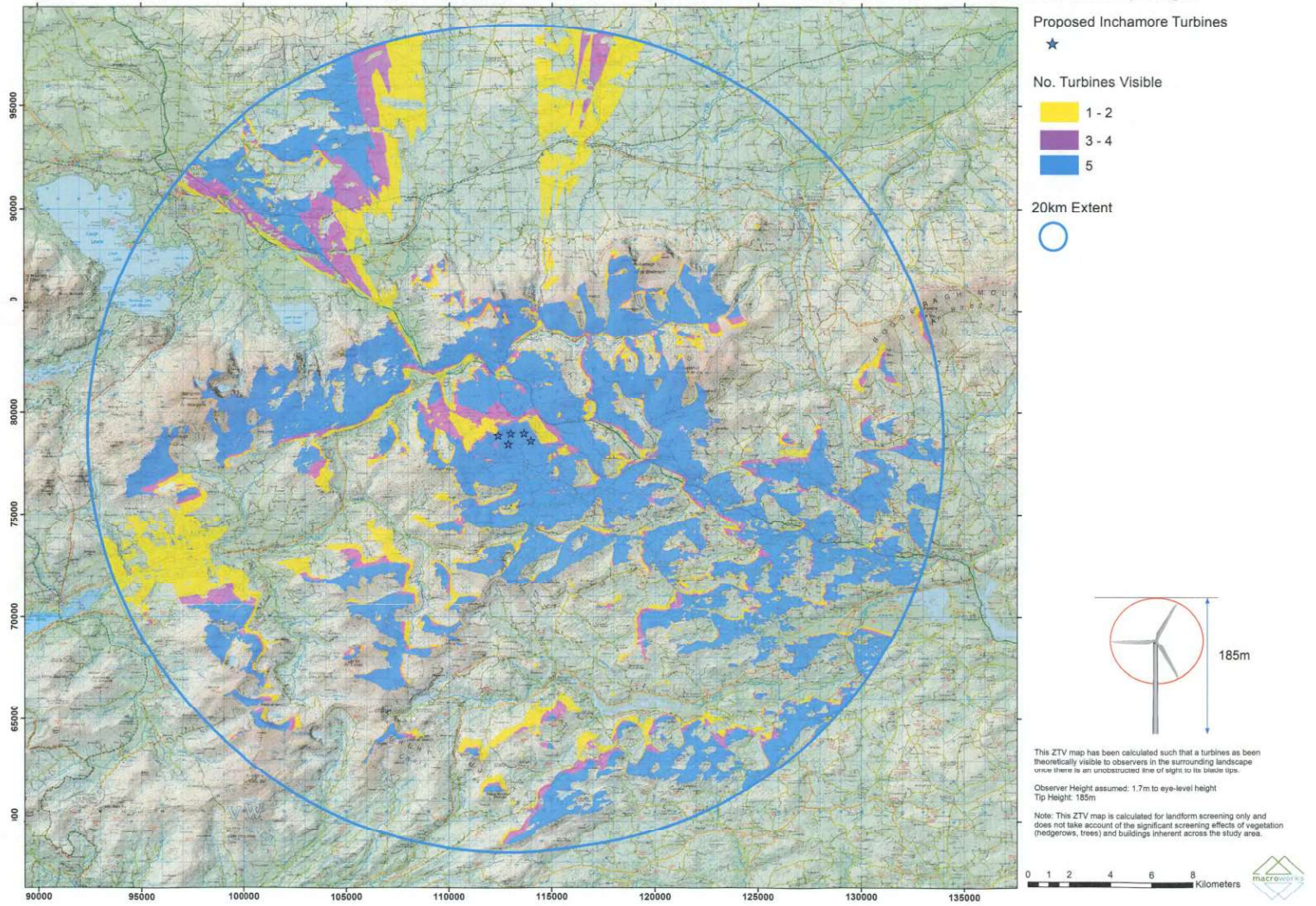


Figure 12.4 Route Screening Assessment (RSA)

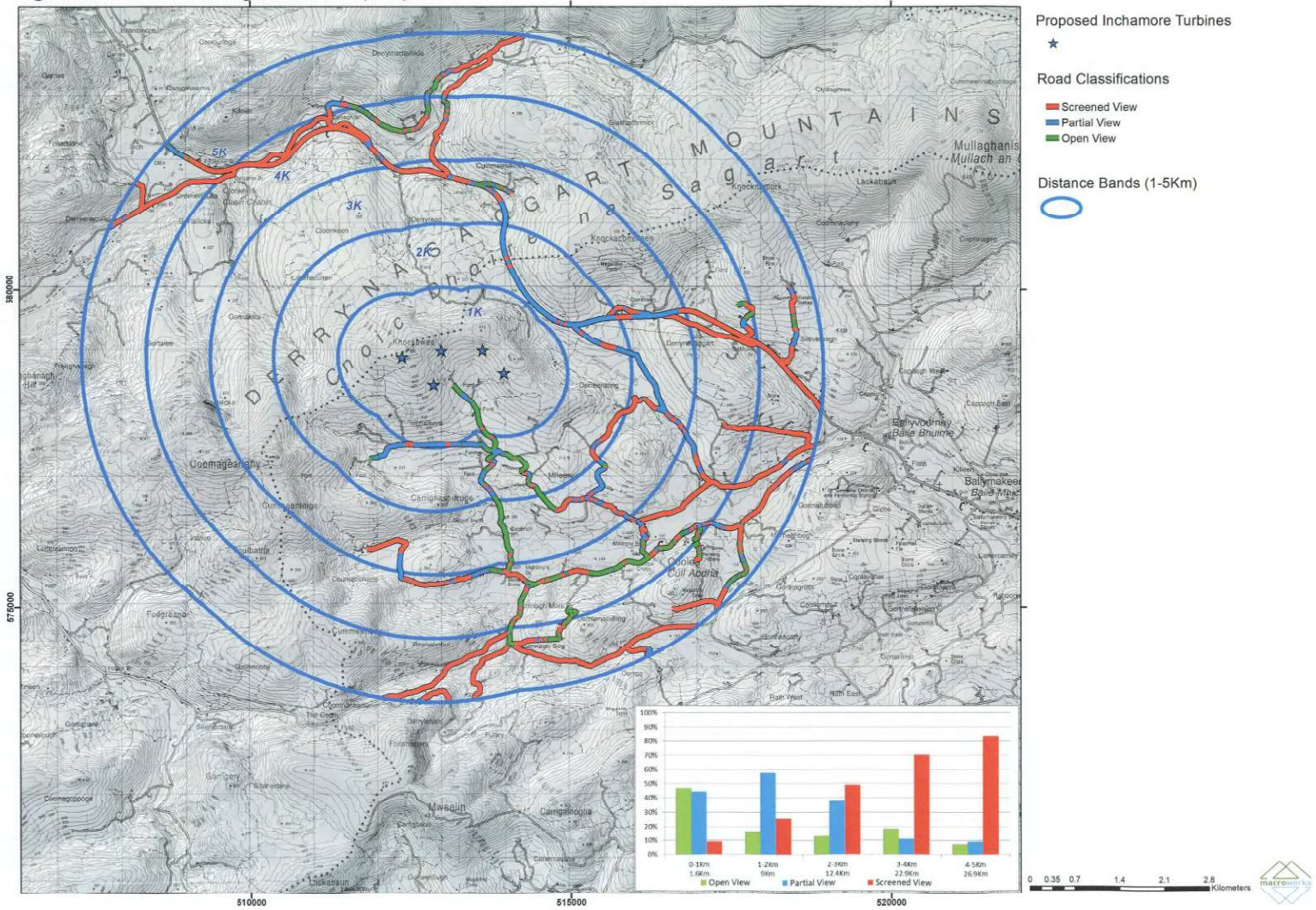


Figure 12.5 RSA "Open View" Refinement Map

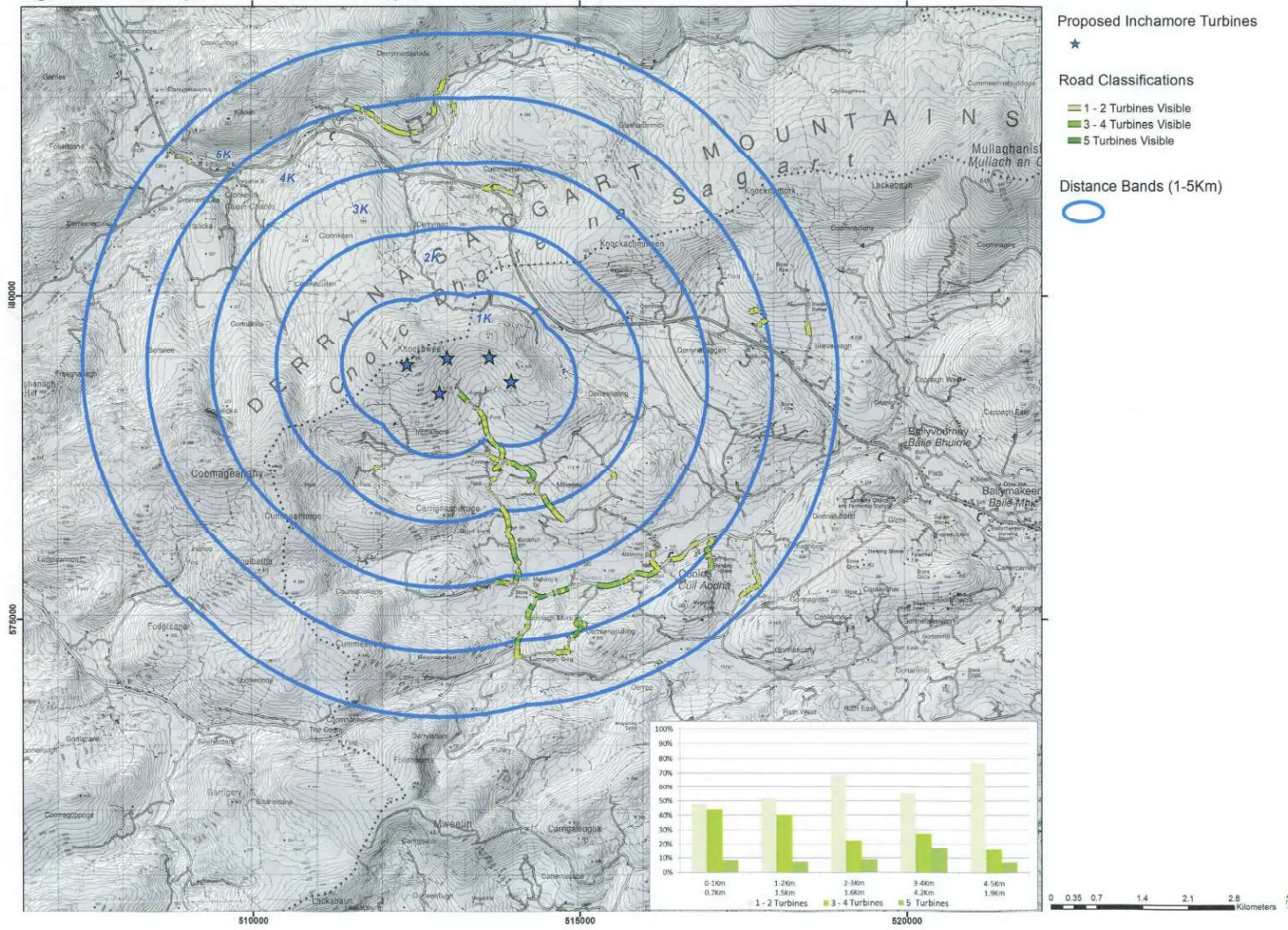


Figure 12.6 Selected Viewpoint Locations Map

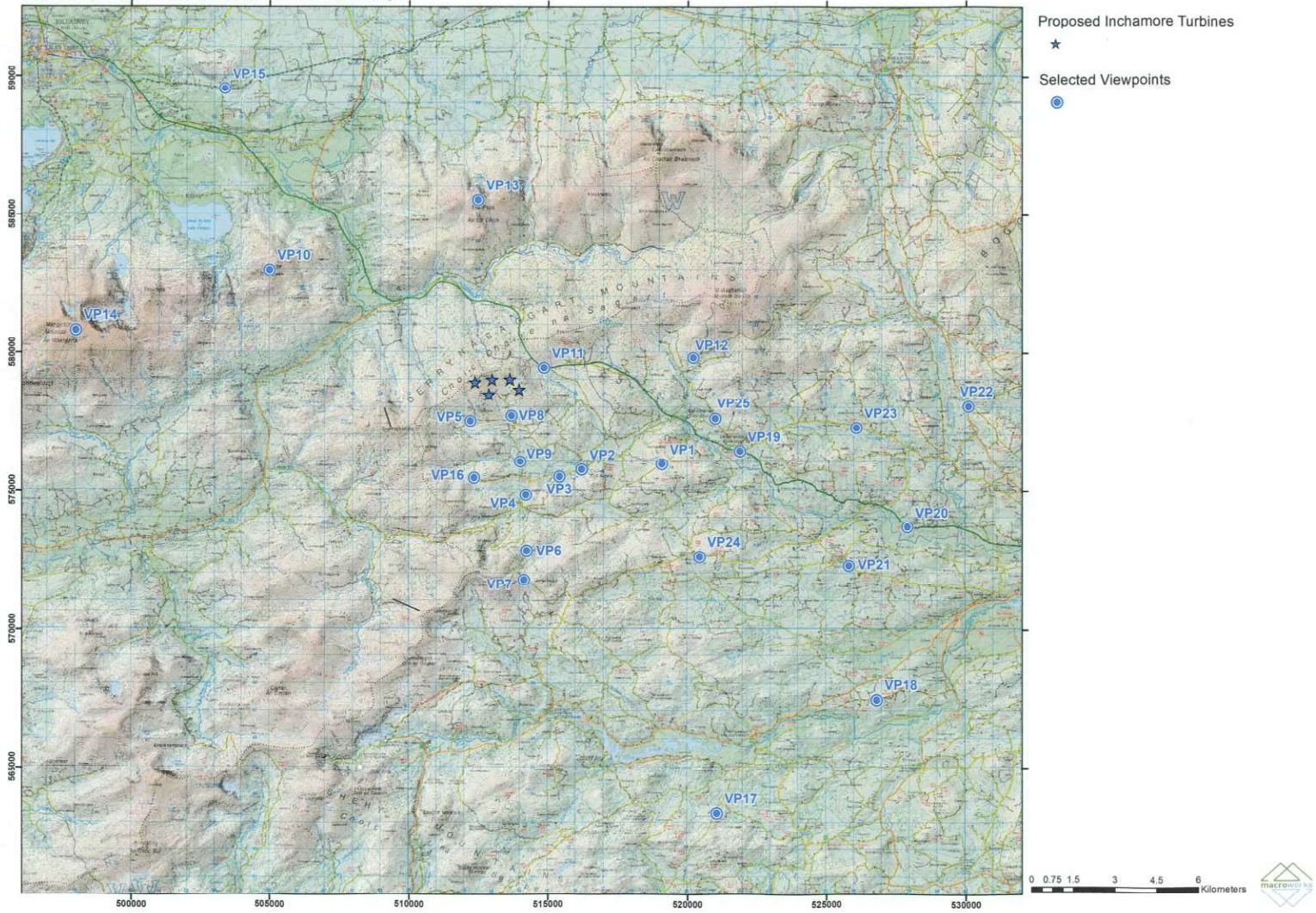


Figure 12.7 ZTV indicating the cumulative theoretical visibility of the proposed Inchamore Wind Farm in combination with other wind farms in the immediate study area

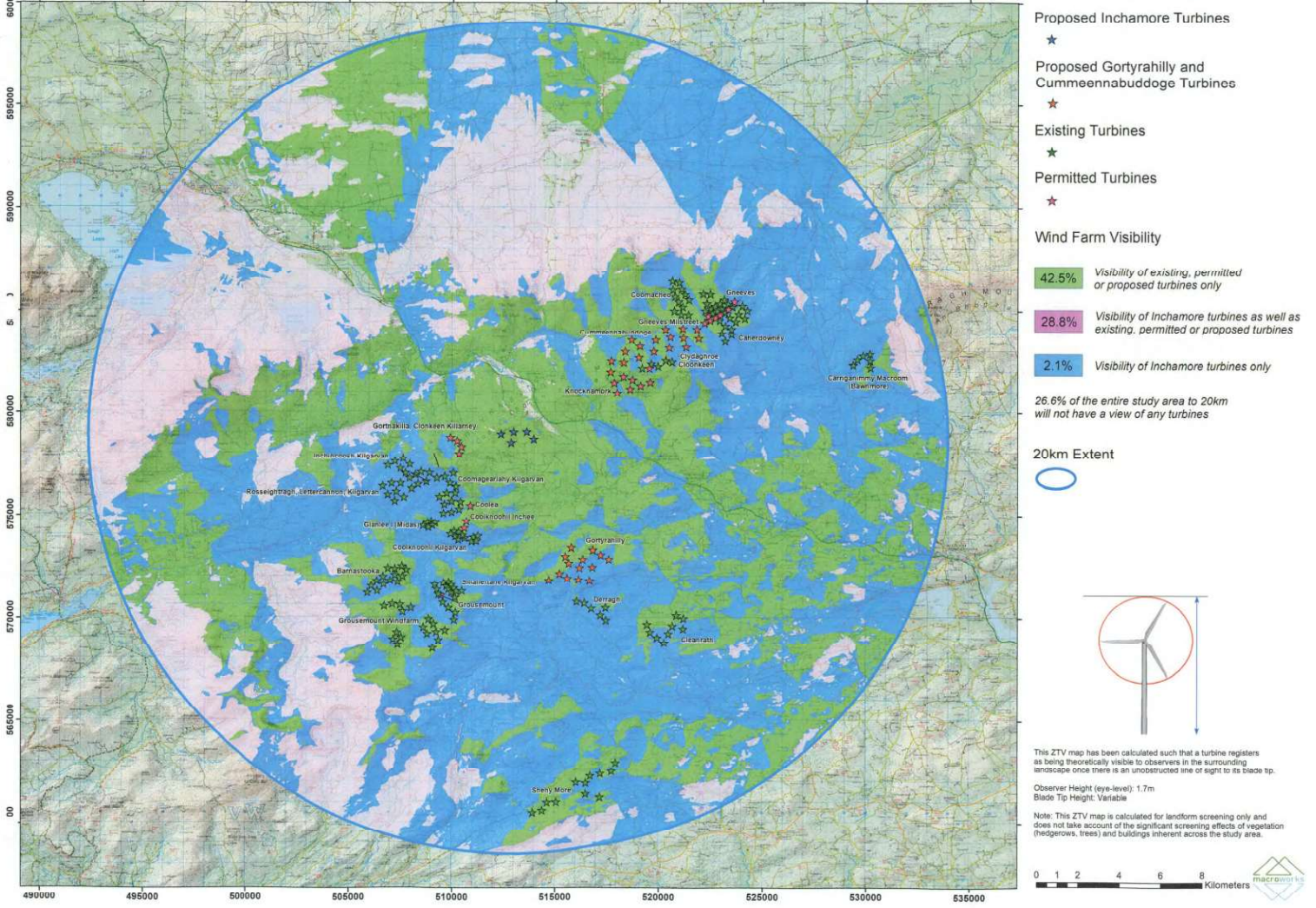


Figure 12.8 Early design Inchmore Wind Farm Design Iteration

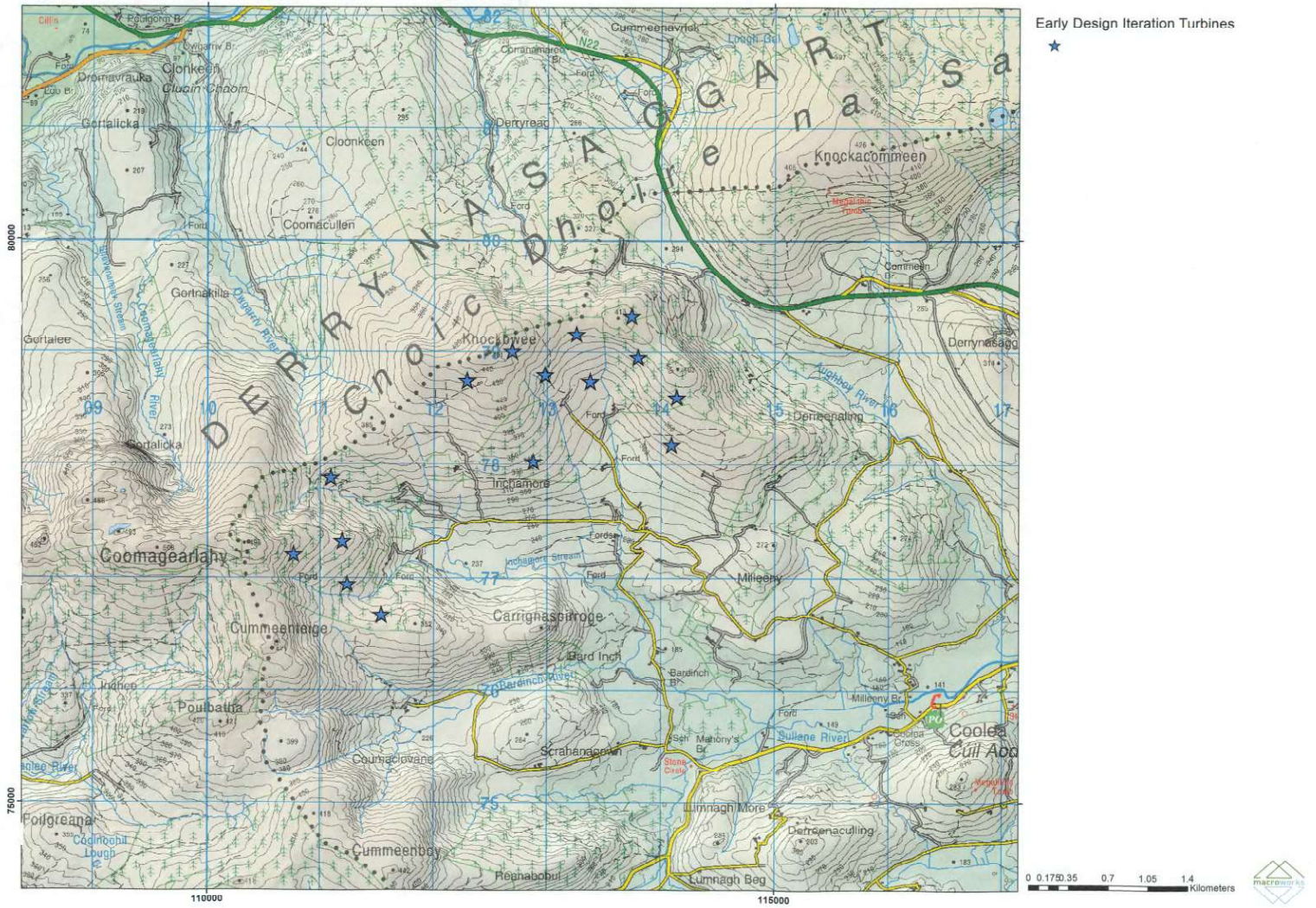


Figure 12.9 Relevant Designated Scenic Routes - Cork and Kerry CDPs including ZTV and selected VPs

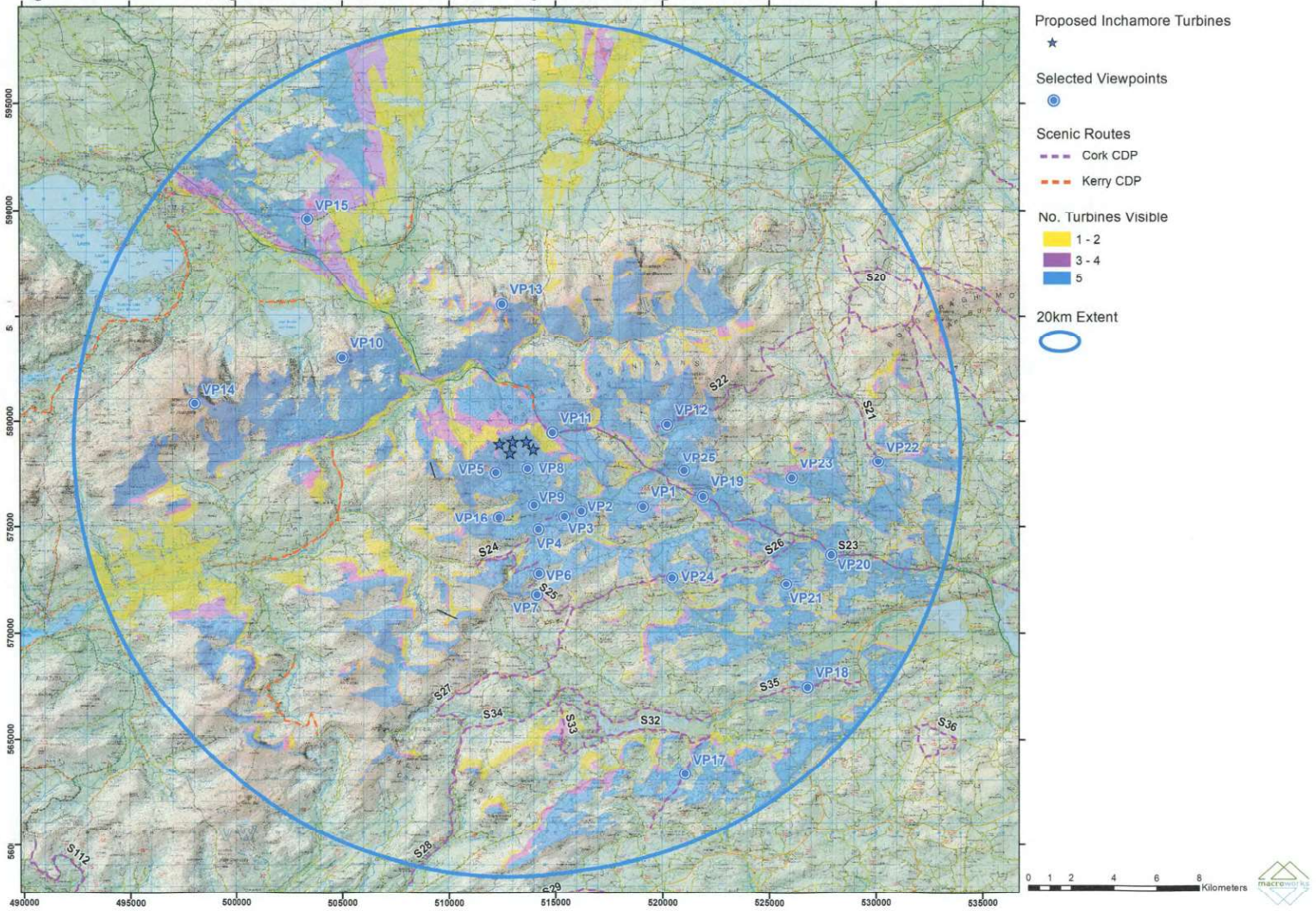


Figure 12.10 Landscape Character Areas - Kerry and Cork County Development Plans

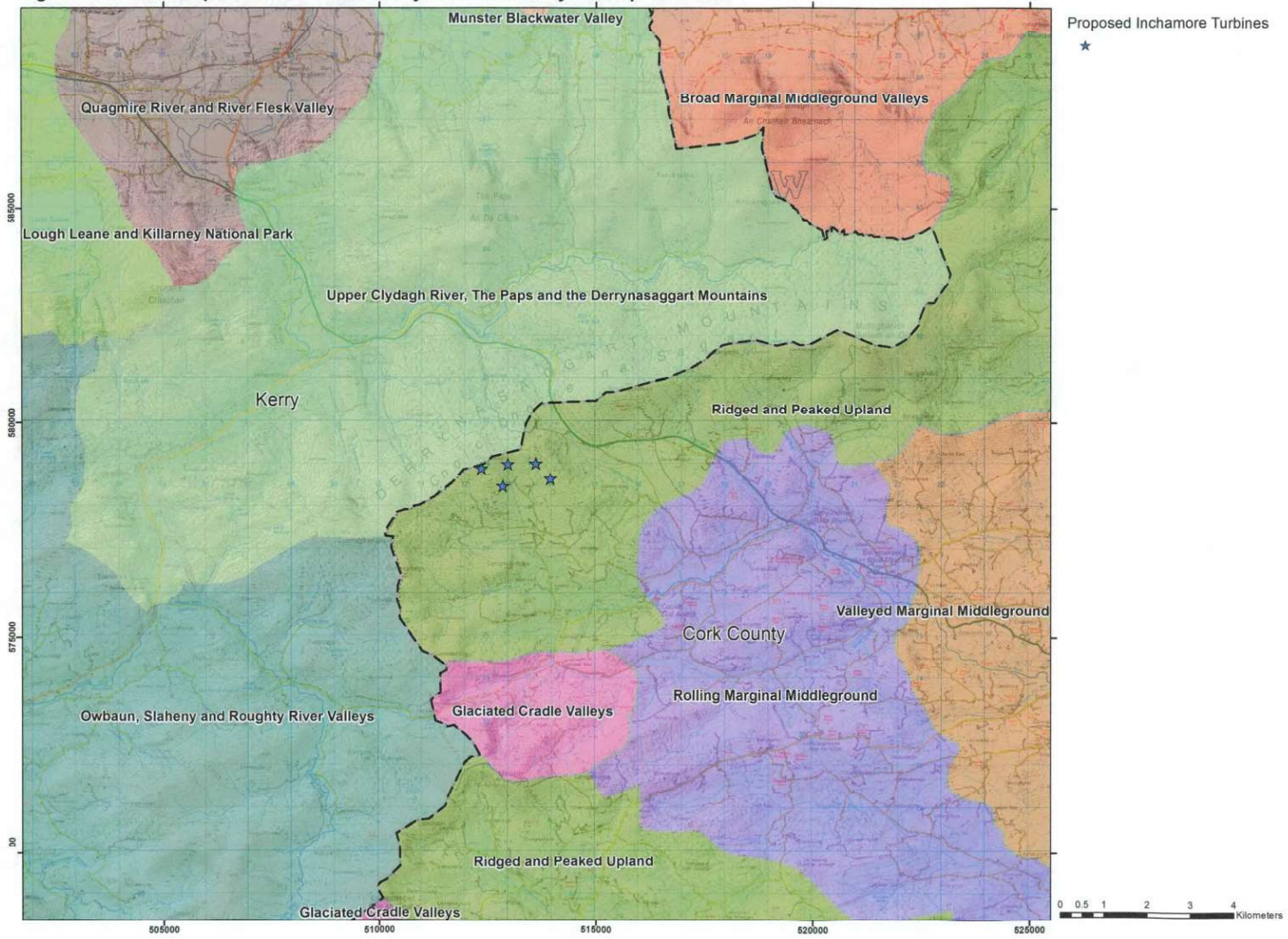


Figure 12.11 Wind Strategy

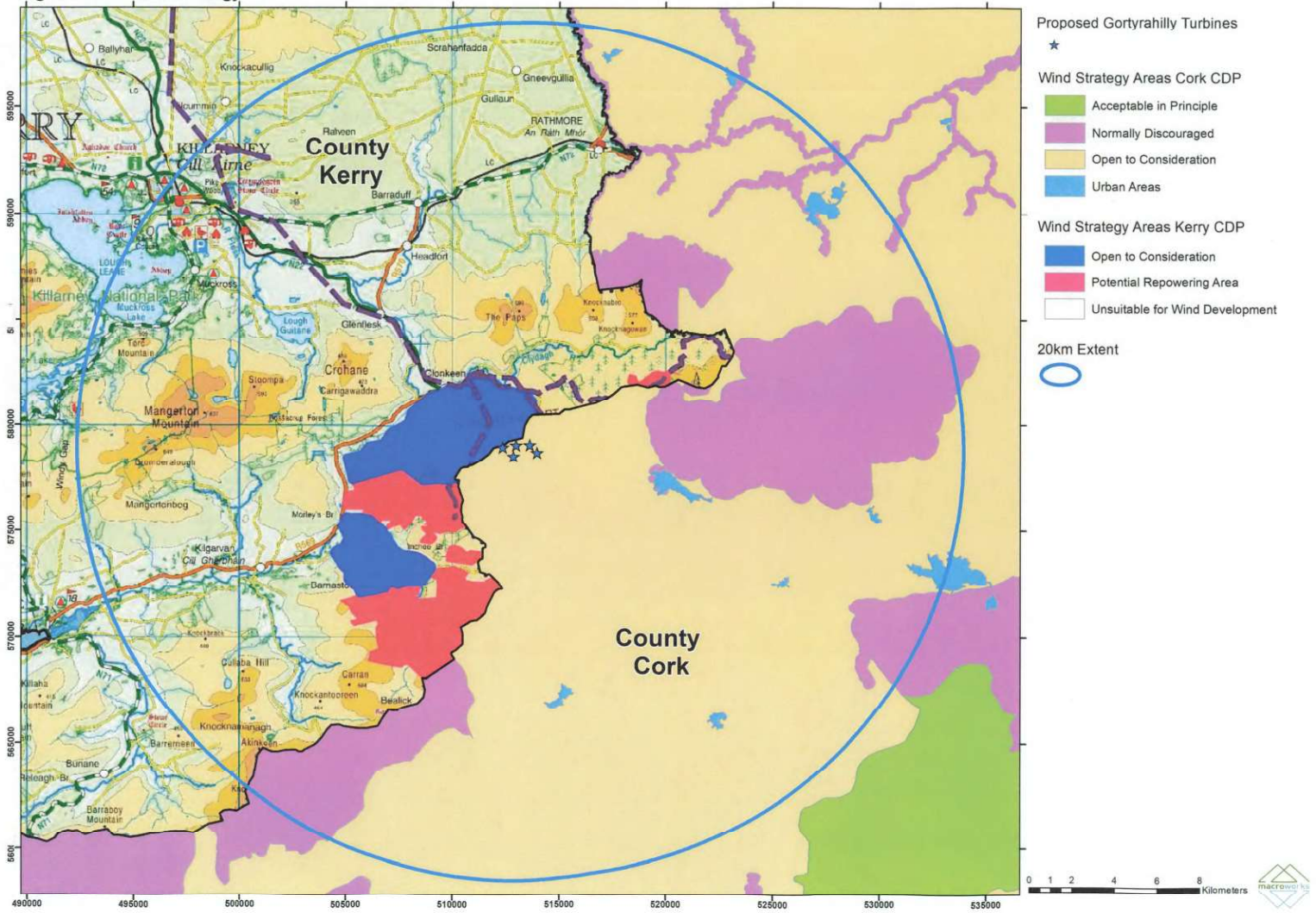
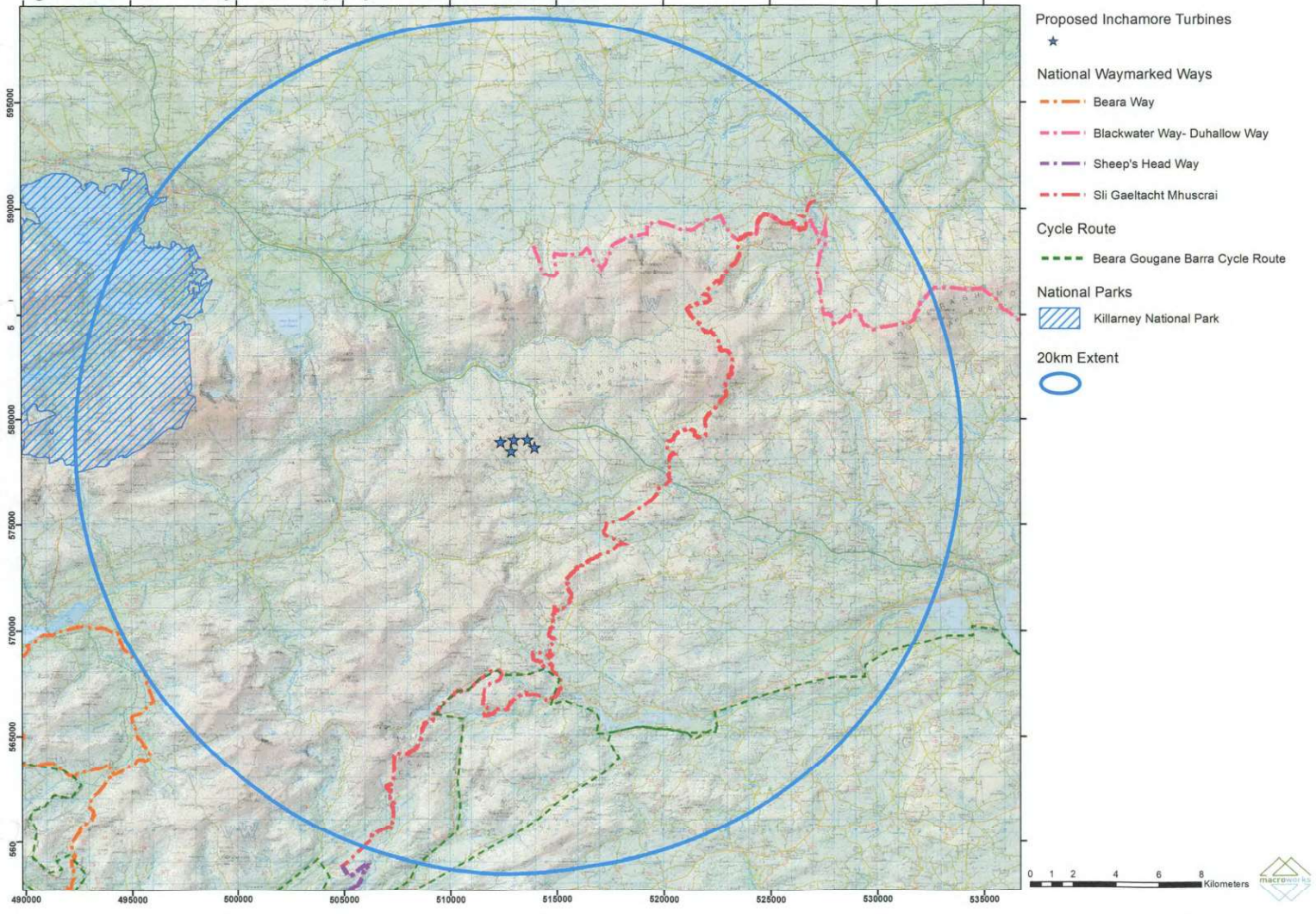


Figure 12.12 National Waymarked Ways, Cycle Routes and National Parks

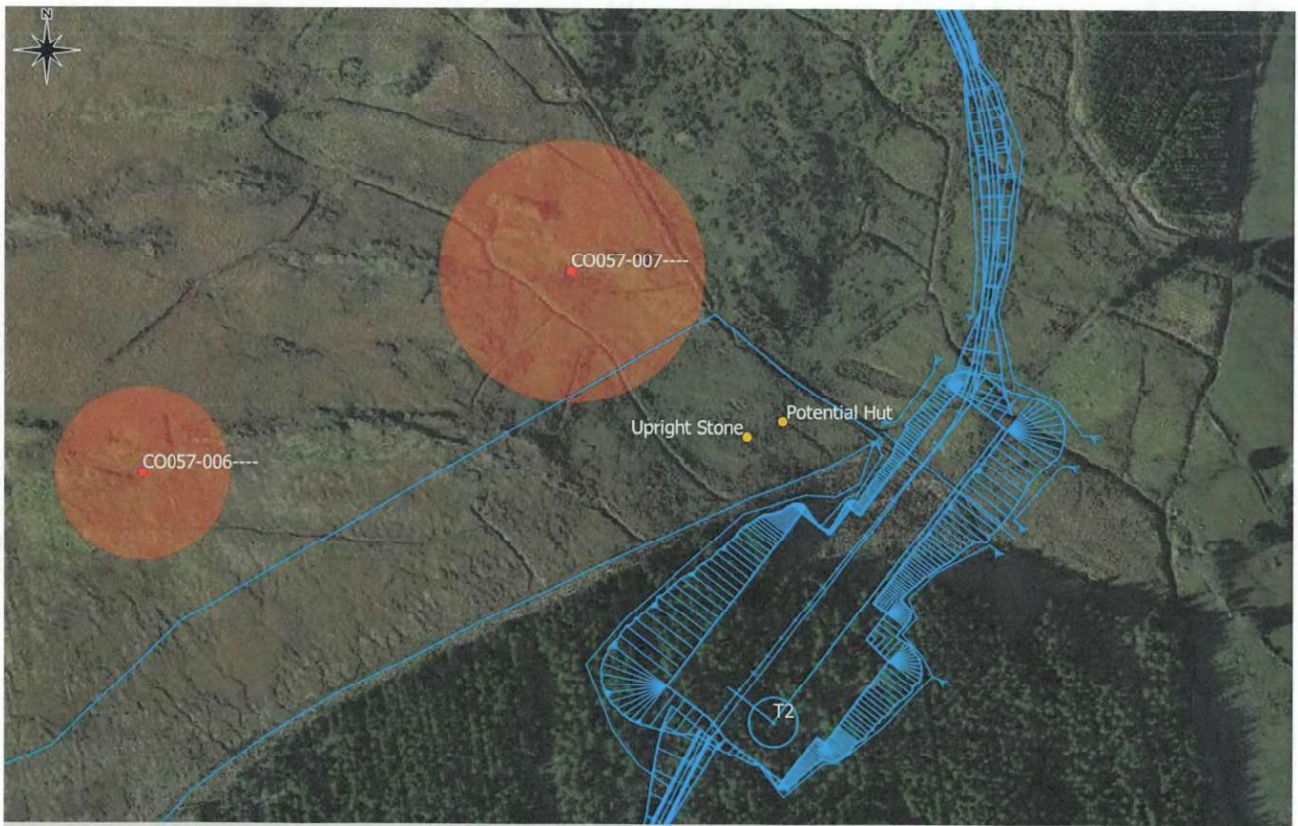


- Proposed Inchmore Turbines
★
- National Waymarked Ways
 - Beara Way
 - Blackwater Way- Duhallo Way
 - Sheep's Head Way
 - Sli Gaeltacht Mhuscraí
- Cycle Route
 - Beara Gougane Barra Cycle Route
- National Parks
 - ▨ Killarney National Park
- 20km Extent
○

Figure 14.1: Location of recorded archaeological sites within 1km of Site (1km Study Area indicated in yellow)

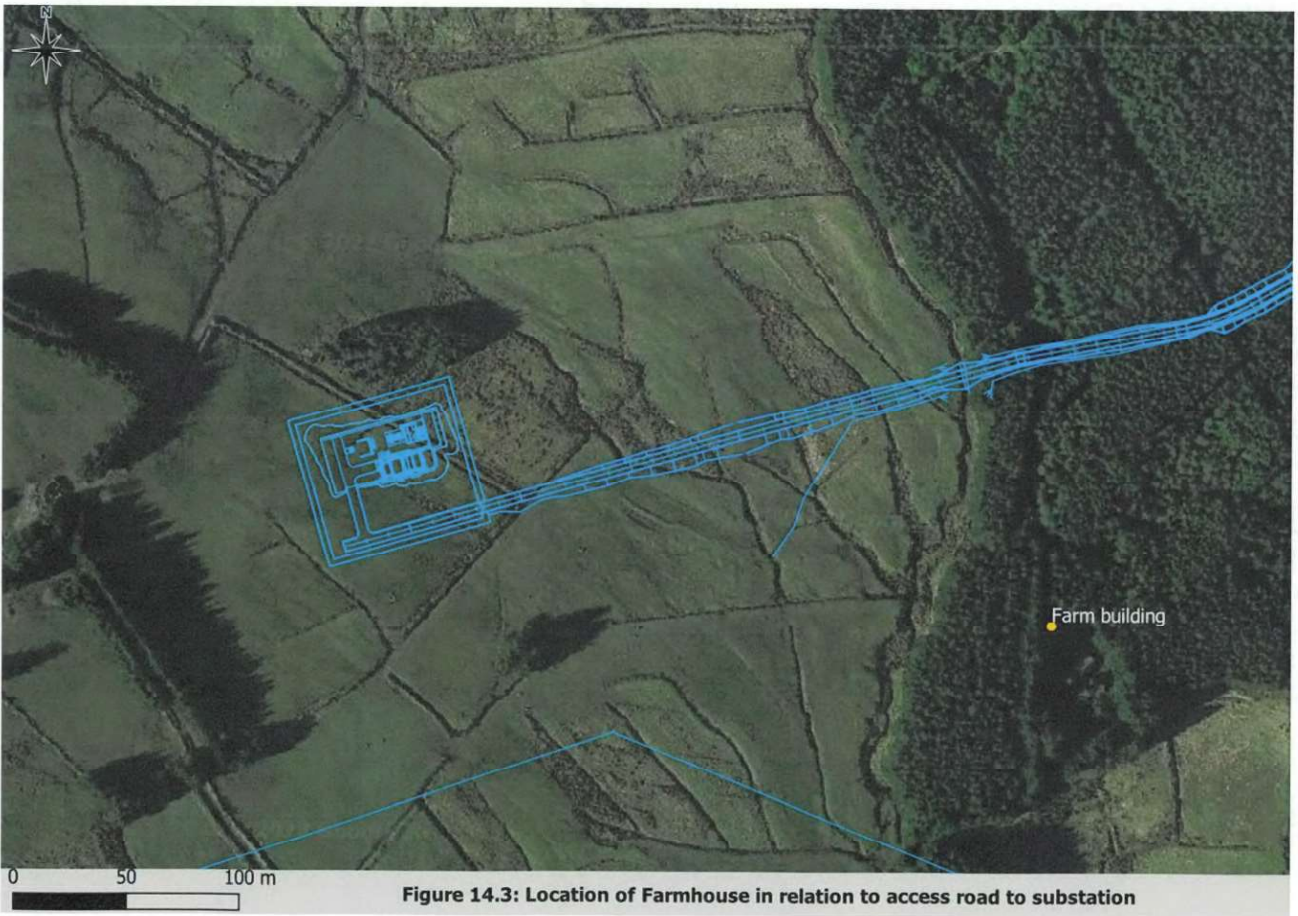
1000 m
500





0 50 100 m

Figure 14.2: Location of Field Boundary (CO057-006) and Enclosure (CO057-007) and potential hut and upright stone in relation to nearest Development Area (T2)



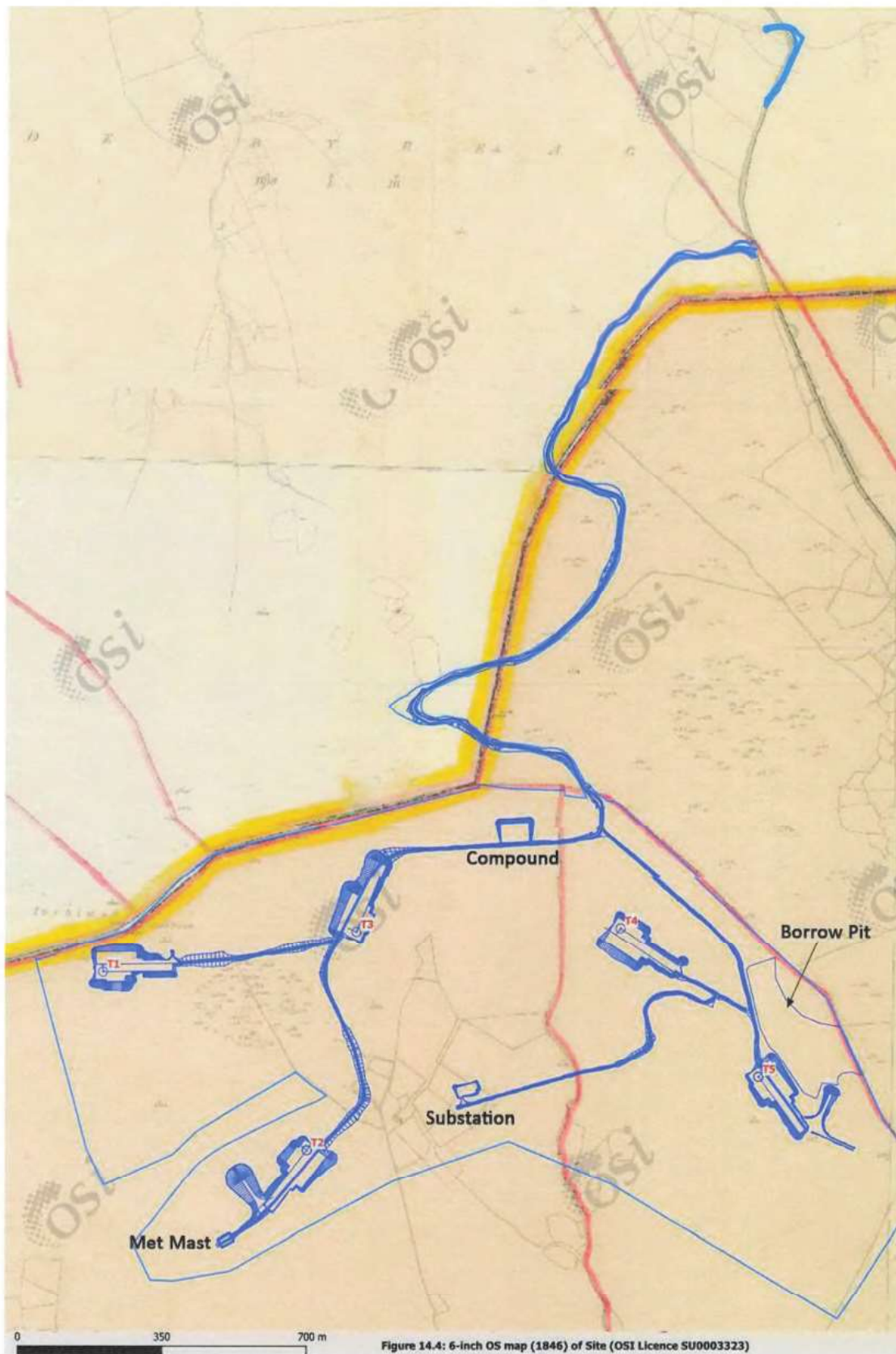


Figure 14.4: 6-inch OS map (1846) of Site (OSi Licence SU0003323)

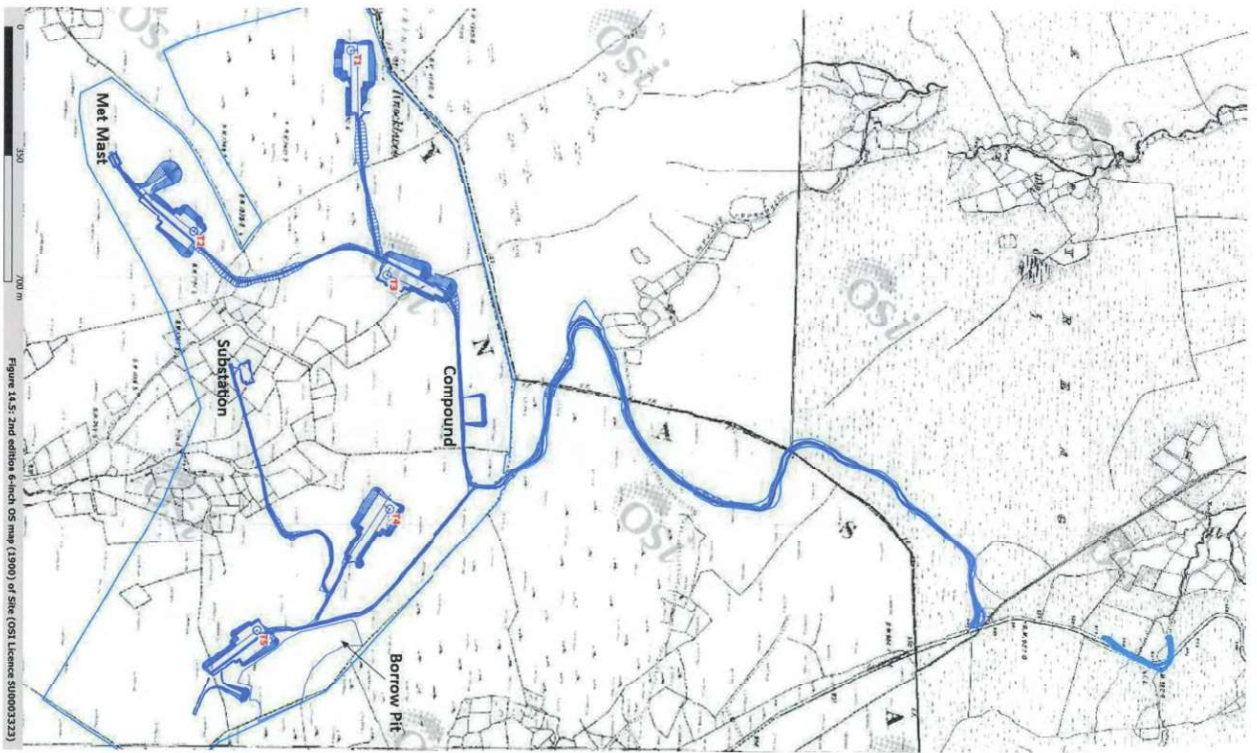


Figure 14.5: 2nd edition Ordnance Survey map (1990) of site (OS Licence 50003323)

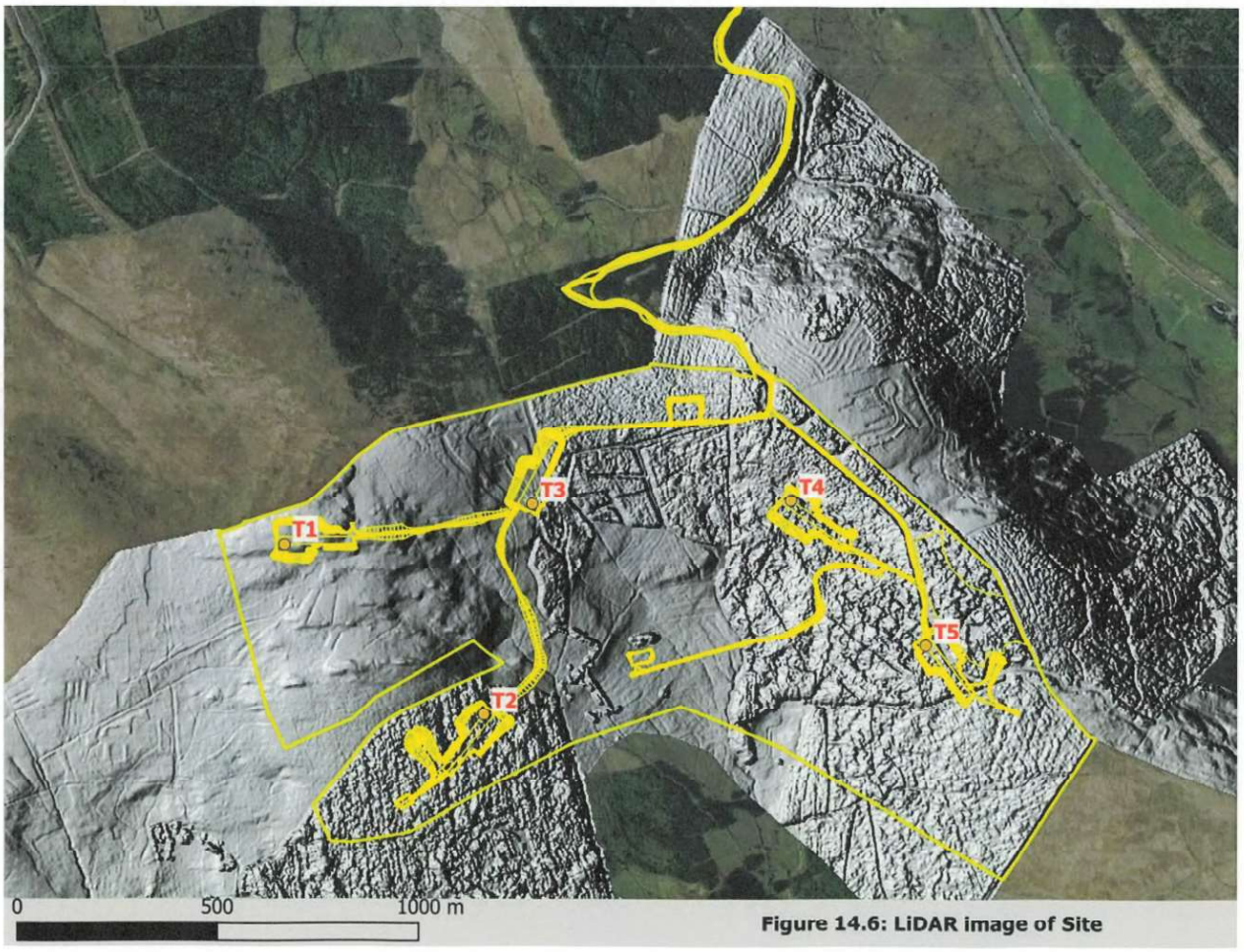


Figure 14.6: LiDAR image of Site

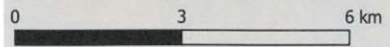


Figure 14.7: Monuments with potential visual alignments within 10km
 Wedge Tombs (Red) / Stone Circles (Cyan) / Stone Row (Yellow) / Stone Pairs (Pink)

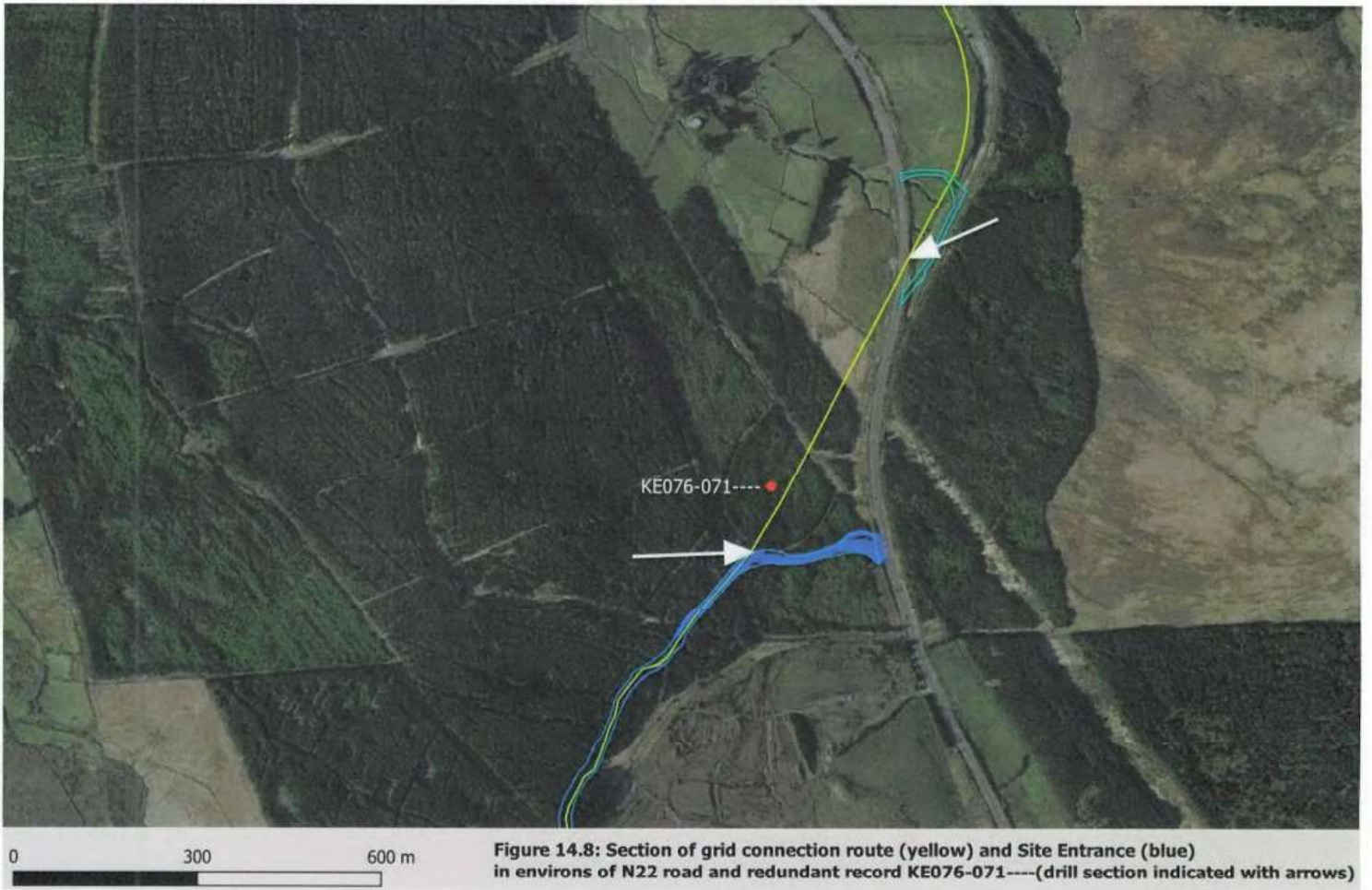


Figure 14.8: Section of grid connection route (yellow) and Site Entrance (blue) in environs of N22 road and redundant record KE076-071----(drill section indicated with arrows)

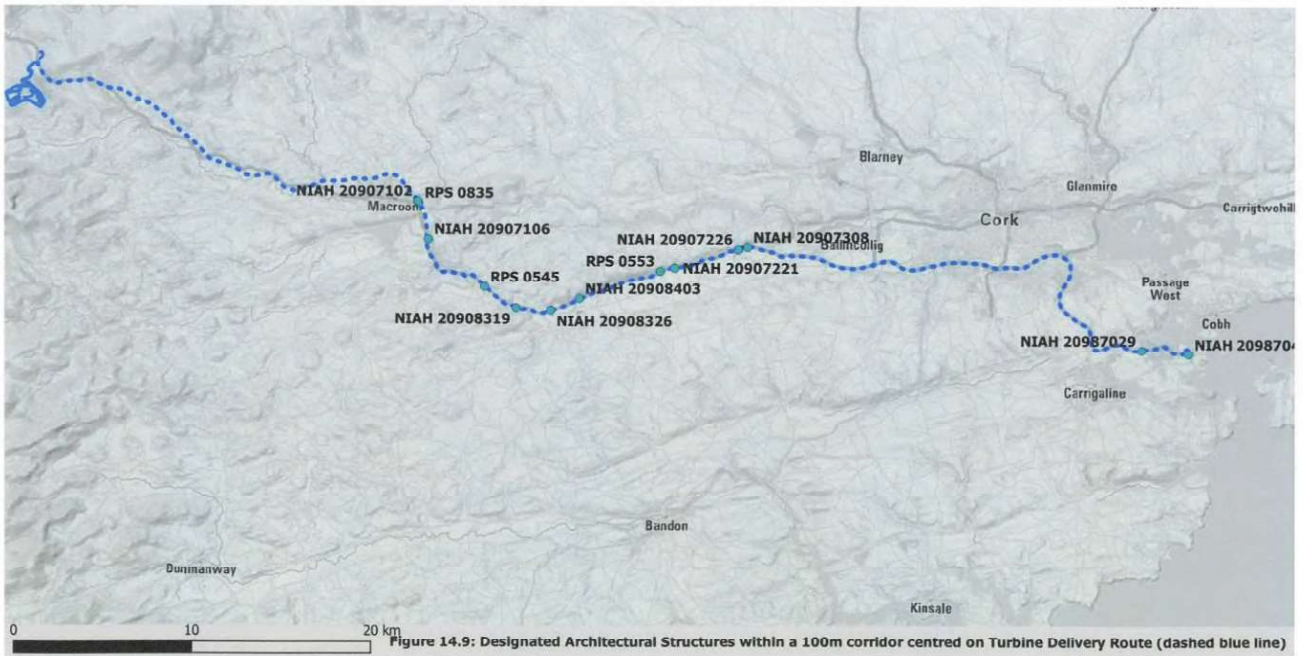


Figure 14.9: Designated Architectural Structures within a 100m corridor centred on Turbine Delivery Route (dashed blue line)

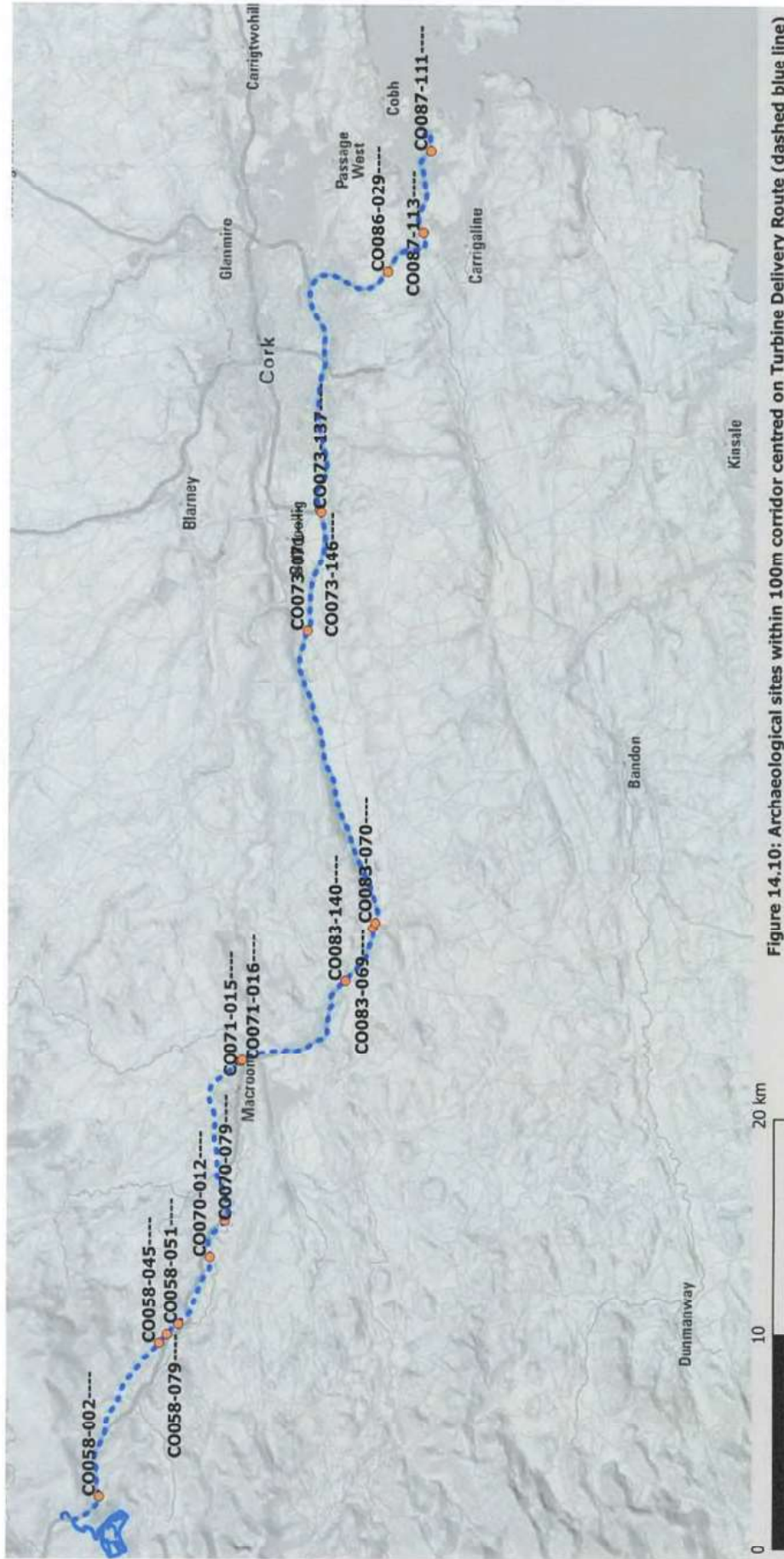


Figure 14.10: Archaeological sites within 100m corridor centred on Turbine Delivery Route (dashed blue line)



0 3.5 7 km

Figure 14.11: Location of Paps Archaeological Landscape (Yellow) in relation to the Site (Blue) and Grid Connection Route (Cyan)